

Marquee™

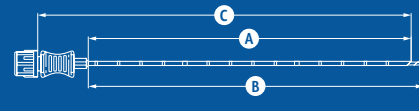
Disposable Core Biopsy Instrument

Marquee™ Disposable Core Biopsy Instrument

Qty	Product Code	Gauge Size & Needle Length
	MQ1210	12g x 10 cm
	MQ1213	12g x 13 cm
	MQ1410	14g x 10 cm
	MQ1413	14g x 13 cm
	MQ1416	14g x 16 cm
	MQ1610	16g x 10 cm
	MQ1616	16g x 16 cm
	MQ1620	16g x 20 cm
	MQ1810	18g x 10 cm
	MQ1816	18g x 16 cm
	MQ1820	18g x 20 cm
	MQ1825	18g x 25 cm
	MQ2010	20g x 10 cm
	MQ2016	20g x 16 cm
	MQ2020	20g x 20 cm

Marquee™ Disposable Core Biopsy Instrument Kit

Qty	Product Code	Instrument Gauge Size and Needle Length	Coaxial		
			(A) Cannula Needle Length	(B) Stylet Needle Length	(C) Total Cannula Length
	MQK1210	12g x 10 cm	4.3 cm	5.1 cm	6.9 cm
	MQK1213	12g x 13 cm	7.3 cm	8.1 cm	9.9 cm
	MQK1410	14g x 10 cm	4.3 cm	4.9 cm	6.9 cm
	MQK1413	14g x 13 cm	7.3 cm	7.9 cm	9.9 cm
	MQK1416	14g x 16 cm	10.3 cm	10.9 cm	12.9 cm
	MQK1610	16g x 10 cm	4.3 cm	4.8 cm	6.9 cm
	MQK1616	16g x 16 cm	10.3 cm	10.9 cm	12.9 cm
	MQK1620	16g x 20 cm	14.3 cm	14.8 cm	16.9 cm
	MQK1810	18g x 10 cm	4.3 cm	4.7 cm	6.9 cm
	MQK1816	18g x 16 cm	10.3 cm	10.7 cm	12.9 cm
	MQK1820	18g x 20 cm	14.3 cm	14.7 cm	16.9 cm
	MQK1825	18g x 25 cm	19.3 cm	19.7 cm	21.9 cm
	MQK2010	20g x 10 cm	4.3 cm	4.6 cm	6.9 cm
	MQK2016	20g x 16 cm	10.3 cm	10.6 cm	12.9 cm
	MQK2020	20g x 20 cm	14.3 cm	14.6 cm	16.9 cm



Powerful Choices. Precisely What You Need.

Marquee™

Disposable Core Biopsy Instrument



REPRESENTATIVE NAME

CONTACT PHONE NO.

PHYSICIAN SIGNATURE

Marquee™ Disposable Core Biopsy Instrument

Indications for Use: The Marquee™ Disposable Core Biopsy Instrument and Kit are intended for use in obtaining biopsies from soft tissues such as liver, kidney, prostate, spleen, lymph nodes and various soft tissue tumors. It is not intended for use in bone.

Contraindications: None known.

Warnings: 1. Good medical judgment should be exercised in considering biopsy on patients who are receiving anticoagulant therapy or who have a bleeding problem. 2. Post-biopsy patient care may vary with the biopsy technique utilized and the individual patient's physiological condition. Observation of vital signs and other precautions should be taken to avoid and/or treat potential complications that may be associated with biopsy procedures. 3. The collection of multiple core biopsy samples may help to ensure the detection of any cancer tissue. A "negative" biopsy in the presence of suspicious radiographic findings does not preclude the presence of carcinoma. 4. The Instrument and Kit have been designed for single use only. Reusing this medical device bears the risk of cross-patient contamination as medical devices – particularly those with long and small lumina, joints, and/or crevices between components – are difficult or impossible to clean once body fluids or tissues with potential pyrogenic or microbial contamination have had contact with the medical device for an indeterminable period of time. The residue of biological material can promote the contamination of the device with pyrogens or microorganisms which may lead to infectious complications. 5. Do not resterilize the Instrument or Kit. After resterilization, the sterility of the product is not guaranteed because of an indeterminable degree of potential pyrogenic or microbial contamination which may lead to infectious complications. Cleaning, reprocessing and/or resterilization of the present medical device increases the probability that the device will malfunction due to potential adverse effects on components that are influenced by thermal and/or mechanical changes. **Note:** Inspect Instrument and Kit

needle components for damaged point, bent shaft or other imperfections prior to use and after each sample is collected. **DO NOT USE** the device if any imperfection is noted. **Note:** After use, the Instrument and Kit may be a potential biohazard. Handle and dispose of in accordance with acceptable medical practice and applicable local, state, and federal laws and regulations.

Precautions: The Instrument and Kit should be used by a physician who is completely familiar with the indications, contraindications, limitations, typical findings and possible side effects of core needle biopsy, in particular, those relating to the specific tissue being biopsied. The introduction of the needle into the body should be carried out under imaging guidance (ultrasound, X-Ray, CT, etc.). **Note:** This product has not been tested for MR Imaging compatibility. Never test the instrument by firing into the air. Damage may occur to the instrument needle tip and could result in patient and/or user injury. Unusual force applied to the stylet or unusual resistance against the stylet while extended out of the cutting cannula may cause the stylet to bend at the sample notch. A bent sample notch may interfere with needle function.

Potential Complications: Potential complications associated with core biopsy procedures are site specific and may include, but are not limited to: hematoma; hemorrhage; infection; adjacent tissue injury; pain; bleeding; hemoptysis; hemothorax; non-target tissue, organ or vessel perforation; pneumothorax; and air embolism. Air embolism is a rare but serious potential complication of lung biopsy procedures. Rapid deterioration of neurological status and/or cardiac arrhythmia may be indicative of air embolism. Prompt diagnosis and treatment must be considered if the patient exhibits signs or symptoms of air embolism.

Please consult product labels and inserts for complete indications, contraindications, hazards, warnings, precautions and directions for use.

bd.com/marquee BD, Tempe, AZ, USA, 1 800 321 4254

BD, the BD Logo, Marquee and Monopty are trademarks of Becton, Dickinson and Company or its affiliates. © 2025 BD. All rights reserved. BD-152122



Procedural versatility from a comprehensive core needle.

Designed with procedural adaptability in mind, the Marquee™ Disposable Core Biopsy Instrument includes semi-automatic and automatic firing modes, along with two selectable penetration depths.

Provides Contiguous Samples

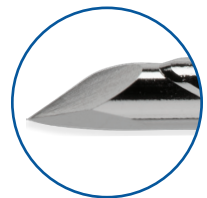
Designed to maintain tissue integrity for contiguous core collection.

Single-Handed Use

Designed for single-handed use, allowing the other hand to guide ultrasound or stabilize tissue.

Color-Coded Gauge Identification

Distinct color indicators make it easy to identify gauge sizes at a glance.



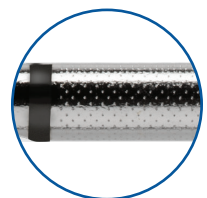
Enhanced Trocar Tip

Available on 12G and 14G needles, designed for ease of insertion.



Minimal Dead Space

Engineered with minimal dead space to facilitate sampling in proximity to anatomical features.



Advanced Echogenic Technology

Enhances the visibility of both the instrument and the coaxial cannula in ultrasound.

Lighter by Design

At just 50 grams, the Marquee™ Disposable Core Biopsy Instrument is 26% lighter than the Monopty™ Disposable Core Biopsy Instrument.*



Kit Option Available

Complete Kit Option streamlines ordering with a single product code for both the biopsy needle and coaxial cannula, ensuring coaxial compatibility.

1 Adjustable

Dual mode disposable core biopsy device with an adjustable penetration depth that offers you a choice between 18 mm and 25 mm for additional control.

2 Efficient

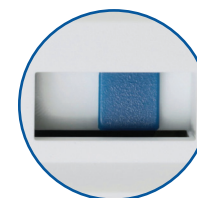
Automatic Mode gives you powerful choices you've come to expect from BD core needles.

3 Precise

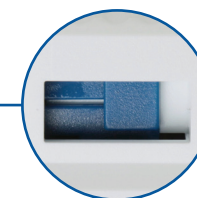
Semi-automatic mode allows users to deploy the stylet and, with imaging, confirm the positioning of the sample notch prior to firing the cutting cannula.

Fire Ready Indicator

Visually confirms when the device is energized.



Sample notch exposed



Fully energized

* Data on File. 12G x 20cm Marquee™ Disposable Core Biopsy Instrument (n=10) and 12G x 10cm Monopty™ Disposable Core Biopsy Instrument (n=5) tested. Bench Data collected on calibrated scale. Different test methods may yield different results.